



# Mount Sinai Rehabilitation Center

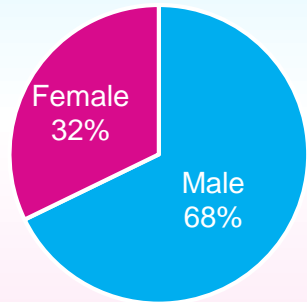
## 2023 Scorecard Spinal Cord Injury Specialty Program

*Furthering ability through clinical care, science, education and innovation*

**Patients Served:** 183

	Complete Tetraplegia	Incomplete Tetraplegia	Paraplegia	Other SCI Dysfunction
Volume	15	56	103	9
Average Age	37	57	57	68
Length of Stay (days)	34.3	27.3	21.8	11.4

We are skilled in ventilator Management and cared for 9 vent-dependent patients in 2023.



### Functional Improvement

The Spinal Cord Independence Measure (SCIM) is a disability scale designed to specifically address the ability of SCI patients to perform activities of daily living independently. An increase of at least 4 points is considered a clinically significant improvement in function.

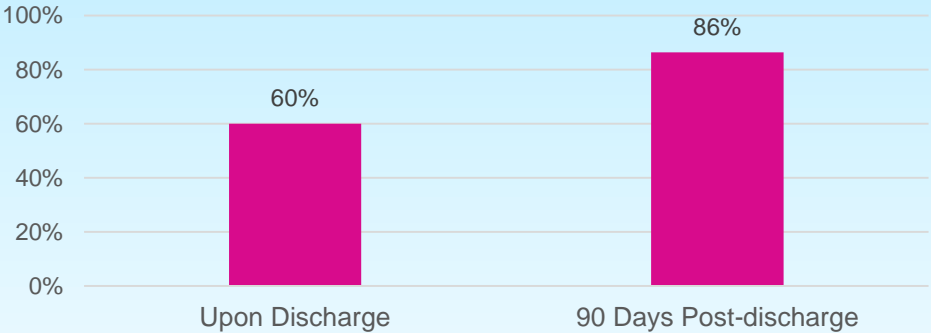
92% of our patients gain at least 4 points from admission to discharge.

## Intensity of Therapy

On average, our patients receive 3.2 hours of therapy per day, including Physical and Occupational Therapy, Speech Language Pathology and Neuropsychology. Supplemental activities are offered daily by our Therapeutic Recreational Specialists.

## Discharge

Living in Community



The majority of our patients are discharged back to the community following inpatient rehabilitation. Some patients (20%) require further rehabilitation in a sub-acute setting prior to returning home. A percentage (20%) require transfer to the acute hospital for further medical management.

Once in the community, 80% of our patients rate the quality of our outpatient therapy as excellent, and up to 60% participate in group support and/or recreational programs.

## Patient Satisfaction

92% of patients are satisfied with the Spinal Cord Specialty Program

*“I’ve never experienced such professionalism as I experienced here. Everyone was awesome. We felt safe, loved and well taken care of.”*

- Press Ganey, 2023



**Mount Sinai Rehabilitation Center**

1 Gustave L. Levy Place  
New York, NY 10029

[www.mountsinai.org/care/rehab-medicine](http://www.mountsinai.org/care/rehab-medicine)